



GAT MONTHLY MEMBERSHIP PROGRESS REPORT

Results as of: 5/31/2024

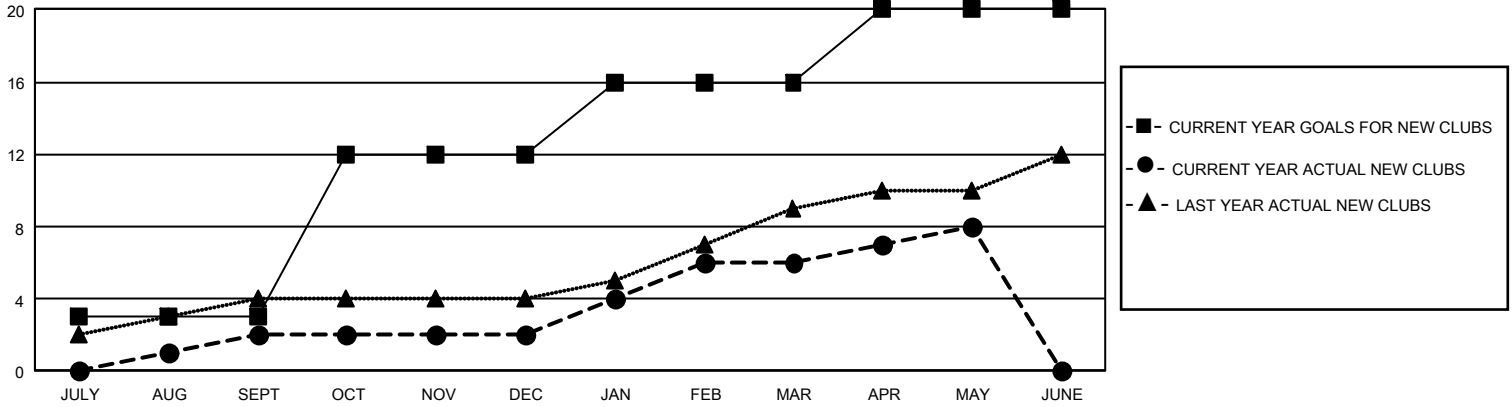
GMT Constitutional Area 2, Group B

REPORT DOES NOT INCLUDE CLUBS IN UNDISTRICTED AREAS.

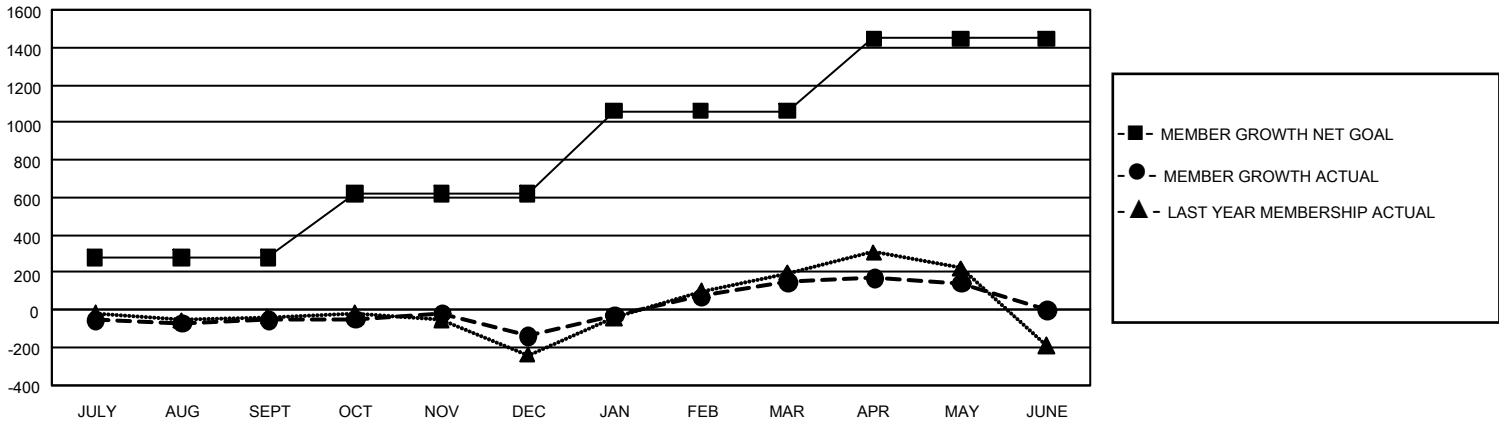
Clubs			
RESULTS FOR 2023-2024			
QUARTER	NEW CLUB GOAL	NEW CLUBS	DROPPED CLUBS
JULY/AUG/SEPT	9	2	1
OCT/NOV/DEC	27	0	3
JAN/FEB/MAR	12	4	1
APR/MAY/JUNE	12	2	5

Members			
RESULTS FOR 2023-2024			
QUARTER	MEMBER GROWTH NET GOAL	MEMBER GROWTH ACTUAL	DROPPED MEMBERS ACTUAL (including transfers)
JULY/AUG/SEPT	281	394	398
OCT/NOV/DEC	339	621	652
JAN/FEB/MAR	441	701	356
APR/MAY/JUNE	385	387	358

GOALS AND ACTUAL NEW CLUBS CUMULATIVE



GOALS AND ACTUAL MEMBERS CUMULATIVE



DROPPED CLUBS: 10 DROPPED MEMBERS DECEASED 244 CLUB CANCELLED 32 OTHER 1,476 TOTAL 1,752	480 CLUBS OF 688 ADDED 1 OR MORE NEW MEMBERS	GENDER DISTRIBUTION MALE 9,862 (61.24%) FEMALE 6,238 (38.74%) NON BINARY 0 (0.00%) PREFER NOT TO ANSWER 3 (0.02%)
	CLICK HERE FOR CUMULATIVE MEMBERSHIP DATA	TOTAL FAMILY UNIT MEMBERS 3,101 FAMILY MEMBERS PAYING HALF DUES 1,603